



EQT Production
455 Racetrack Road, Suite 101
Washington, PA 15301
www.eqt.com

John Zavatchan
Landman - Permitting
O:412-395-3144
C:412-584-3132
jzavatchan@eqt.com

November 20, 2013

Via Certified Mail

Peters Township Supervisors
610 E. McMurray Rd.
McMurray, PA 15317

**Re: EQT Southwest PA Water Management Plan
Source 48: PA American Water @ Turkeyfoot Road
Public Water Withdrawal Application
Peters Township, Washington County, PA**

Dear Township Officials:

Notice is hereby given that EQT Production will be submitting an application with the Pennsylvania Department of Environmental Protection (PADEP) Southwest Regional Office for a public water supply withdrawal located in Union Township, Washington County, PA.

The withdrawal location is illustrated on the attached topographic map. The purpose of the withdrawal is for use in the drilling and development of natural gas wells and related projects.

You are receiving this notice because the water withdrawal is located in your township or county, and PADEP regulations require that a notification be sent prior to an application approval. There is no action needed on your part.

Interested parties should contact:

John Zavatchan
EQT Production Company
455 Racetrack Road, Suite 101
Washington, PA 15301
Phone: 412-395-3144

Sincerely,

John Zavatchan
EQT Production

Enclosures: 1) Site Location Map

Certified Mail Number 7012 3460 0003 3602 2267

LON 80°02' (NAD 83)

TRAX FARMS PAD LAYOUT

AREAS EXCLUDED FROM THE UNIT

LOCATION AT LANDING
LAT 40°16'41.73"
LON 80°01'33.17"
(NAD 83)

56830'
AZ=320° (GN)
PROPOSED HORIZONTAL SECTION
N35°40'47"W 5583'
(DEVIATION)

N57°36'10"E
471'
(DEVIATION)

(TIE)
S65°W 2148'

EXISTING ACCESS ROAD

TRAX ROAD
T-735

PROPOSED TRAX FARM
592307
WELL LOCATION &
KOP

FINLEYVILLE
SR 0088
ROAD

(TIE)
N52°E 2245'

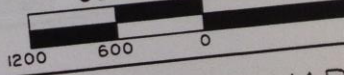
UNIT BOUNDARY

40°16'38.89"
-80°01'39.03"
40°16'38.89"
-80°01'39.03"
40°16'41.48"
-80°01'33.98"
40°17'22.86"
-80°02'22.55"

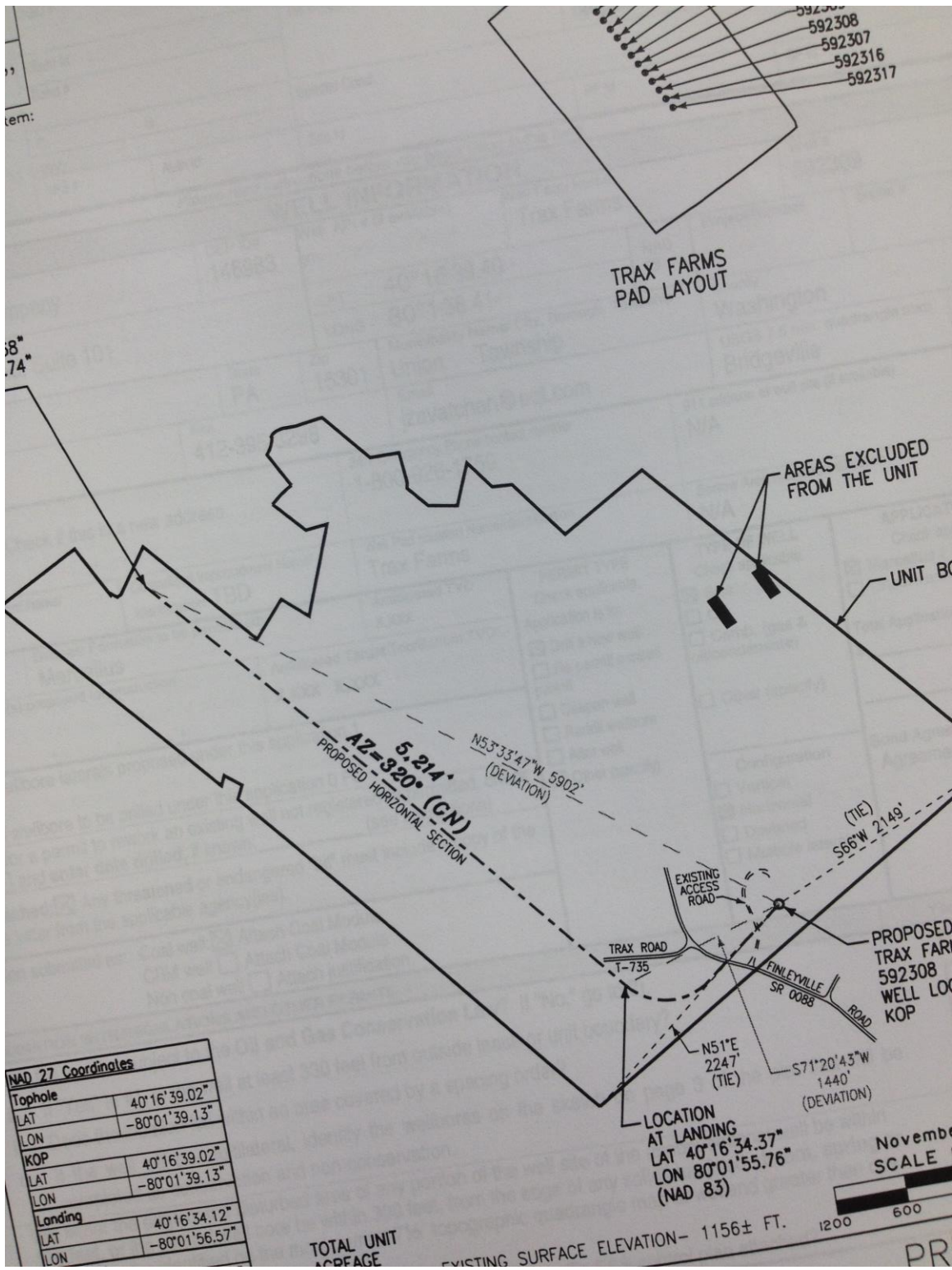
TOTAL UNIT
ACREAGE
516.81 Ac.

EXISTING SURFACE ELEVATION - 1156± FT.

November 22, 2013
SCALE 1" = 1200'



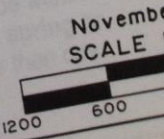
PRELIMINARY



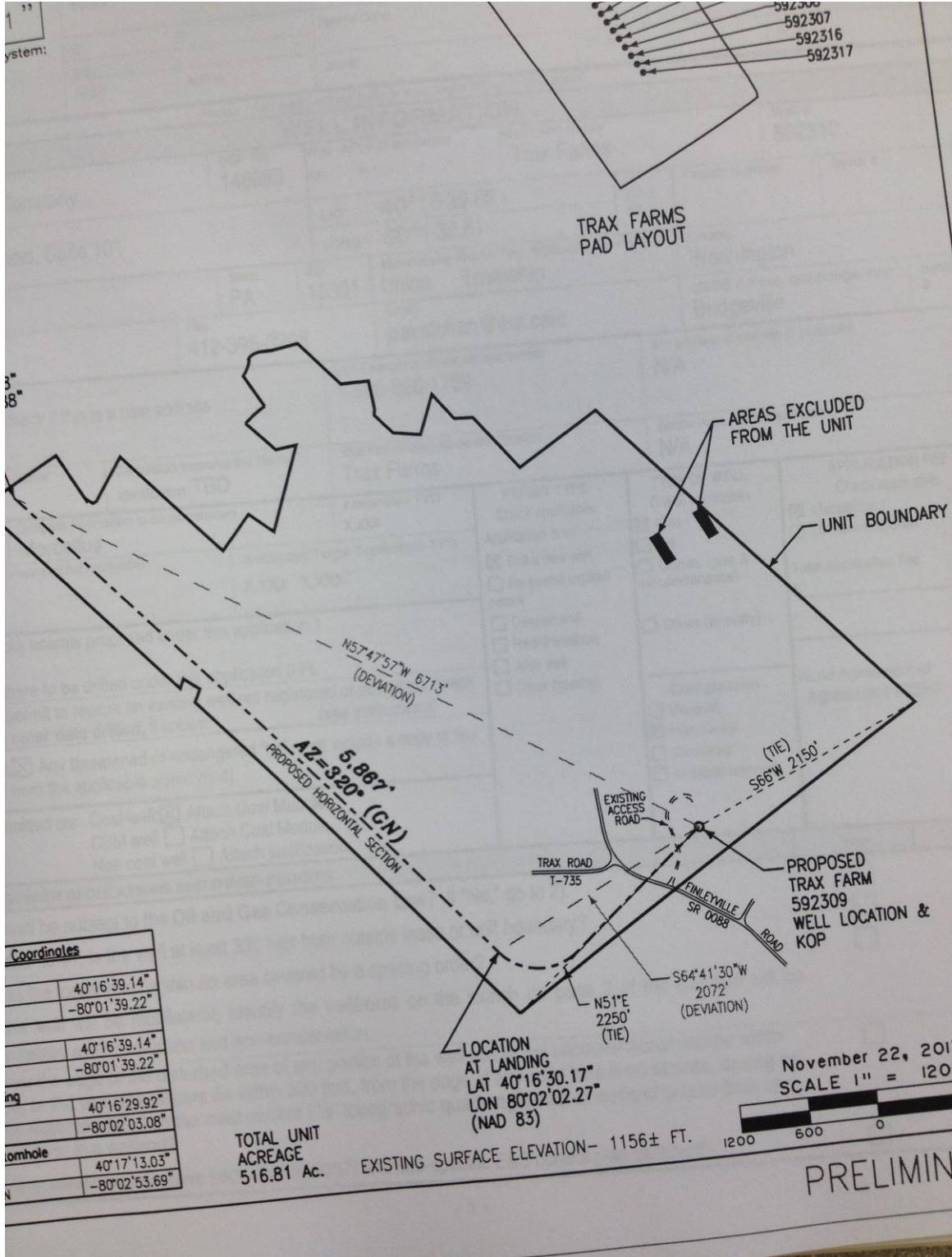
NAD 27 Coordinates	
Tophole	
LAT	40°16'39.02"
LON	-80°01'39.13"
KOP	
LAT	40°16'39.02"
LON	-80°01'39.13"
Landing	
LAT	40°16'34.12"
LON	-80°01'56.57"

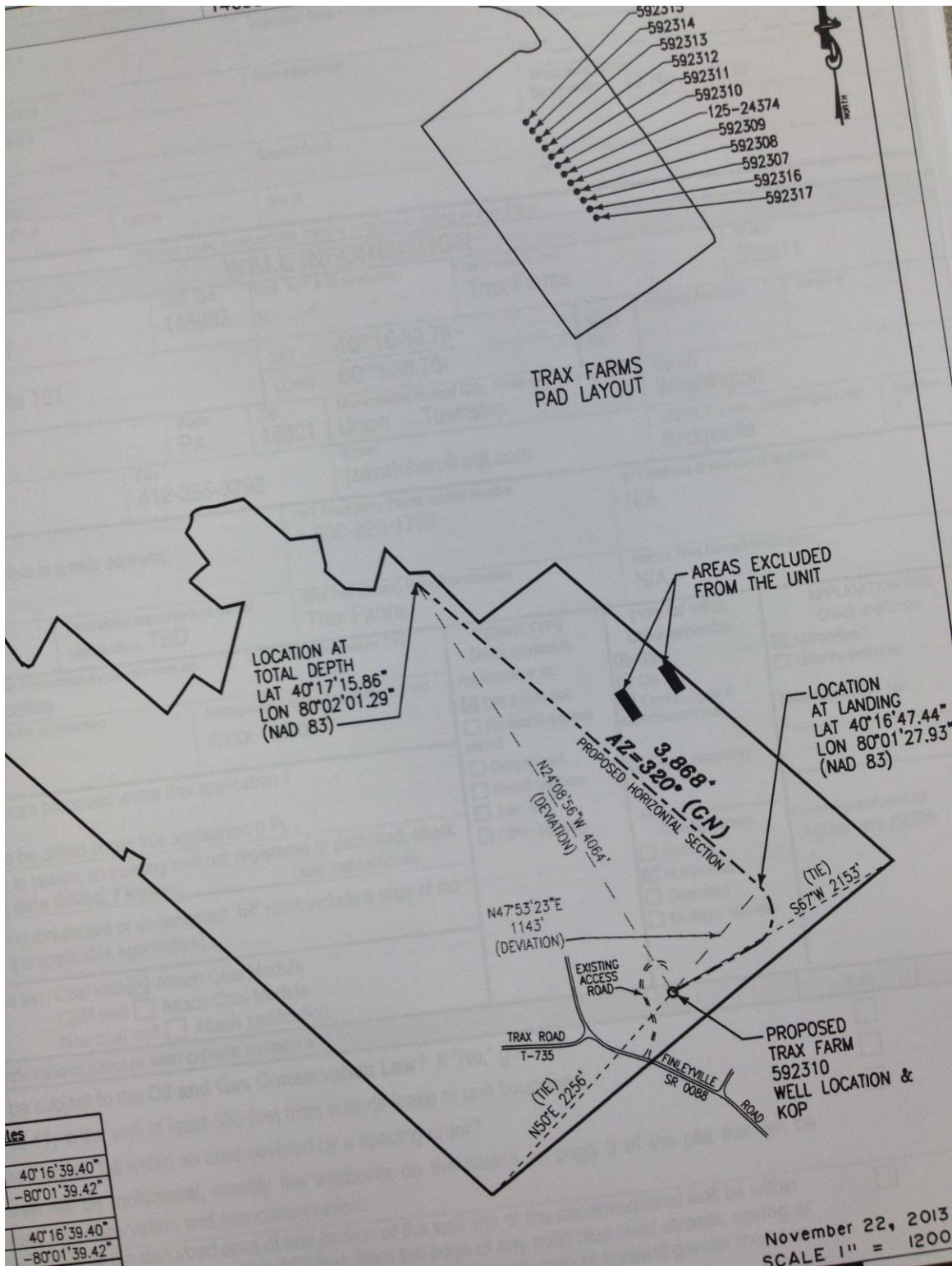
TOTAL UNIT
ACREAGE

EXISTING SURFACE ELEVATION - 1156 ± FT.



PR





WELL LOCATION PLAT

PAGE 3 Plan View of Deviated Well Bore

Well #: 592311

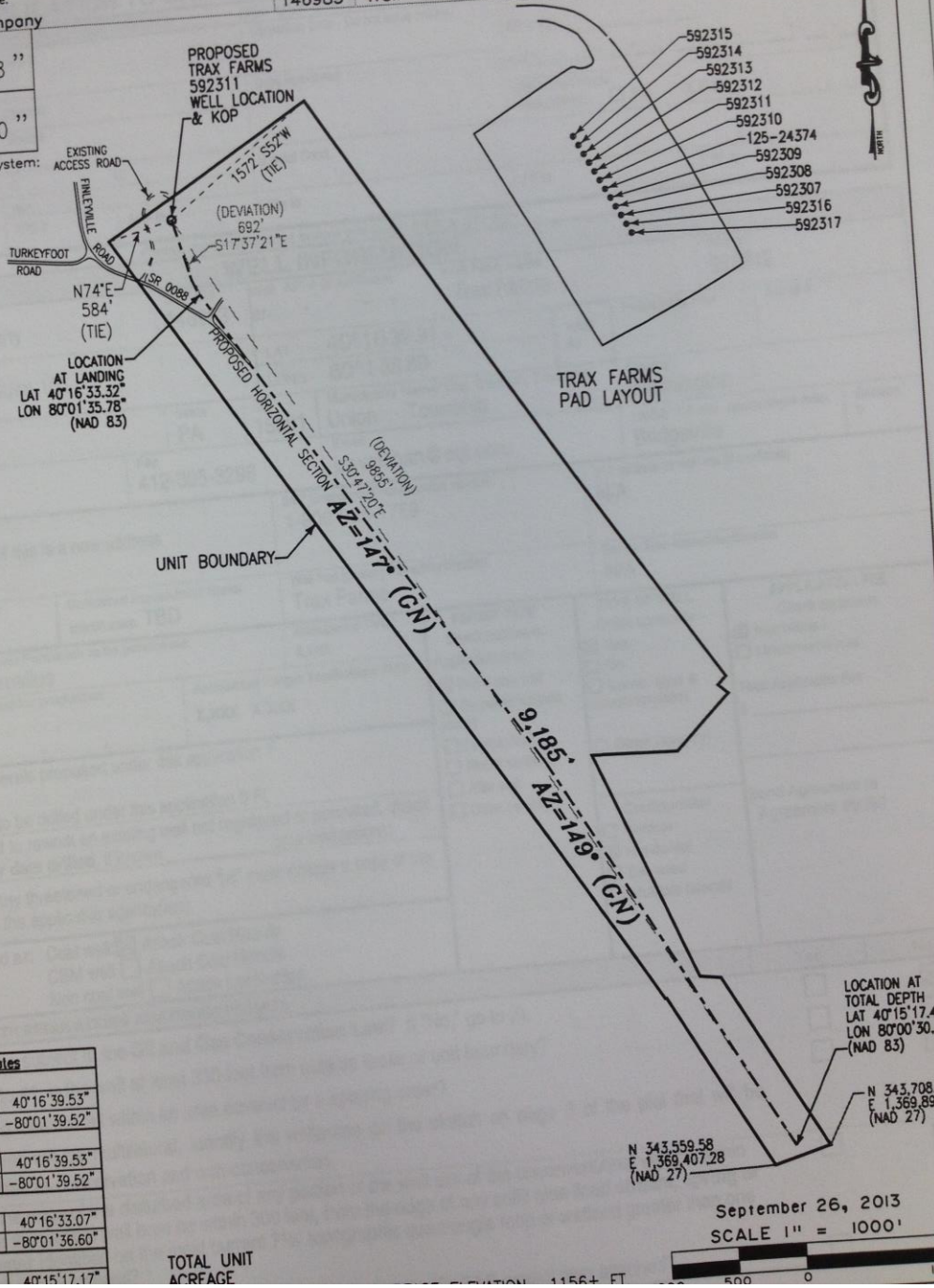
Production Company

Latitude: NORTH
 40° 16' 39.78"

Longitude: WEST
 80° 01' 38.70"

Horizontal Coordinate System:
 NAD 83

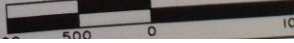
DEP ID#: 146983 Well (Form) Name: Trax Farms



NAD 27 Coordinates	
Tophole	
LAT	40°16'39.53"
LON	-80°01'39.52"
KOP	
LAT	40°16'39.53"
LON	-80°01'39.52"
Landing	
LAT	40°16'33.07"
LON	-80°01'36.60"
Bottomhole	
LAT	40°15'17.17"
LON	-80°00'30.80"

TOTAL UNIT ACREAGE

September 26, 2013
 SCALE 1" = 1000'



IM0002 4/2012

WELL LOCATION PLAT

PAGE 3 Plan View of Deviated Well Bore

Well #: 592312

DEP ID#: 146983 Well (Farm) Name: Trax Farms

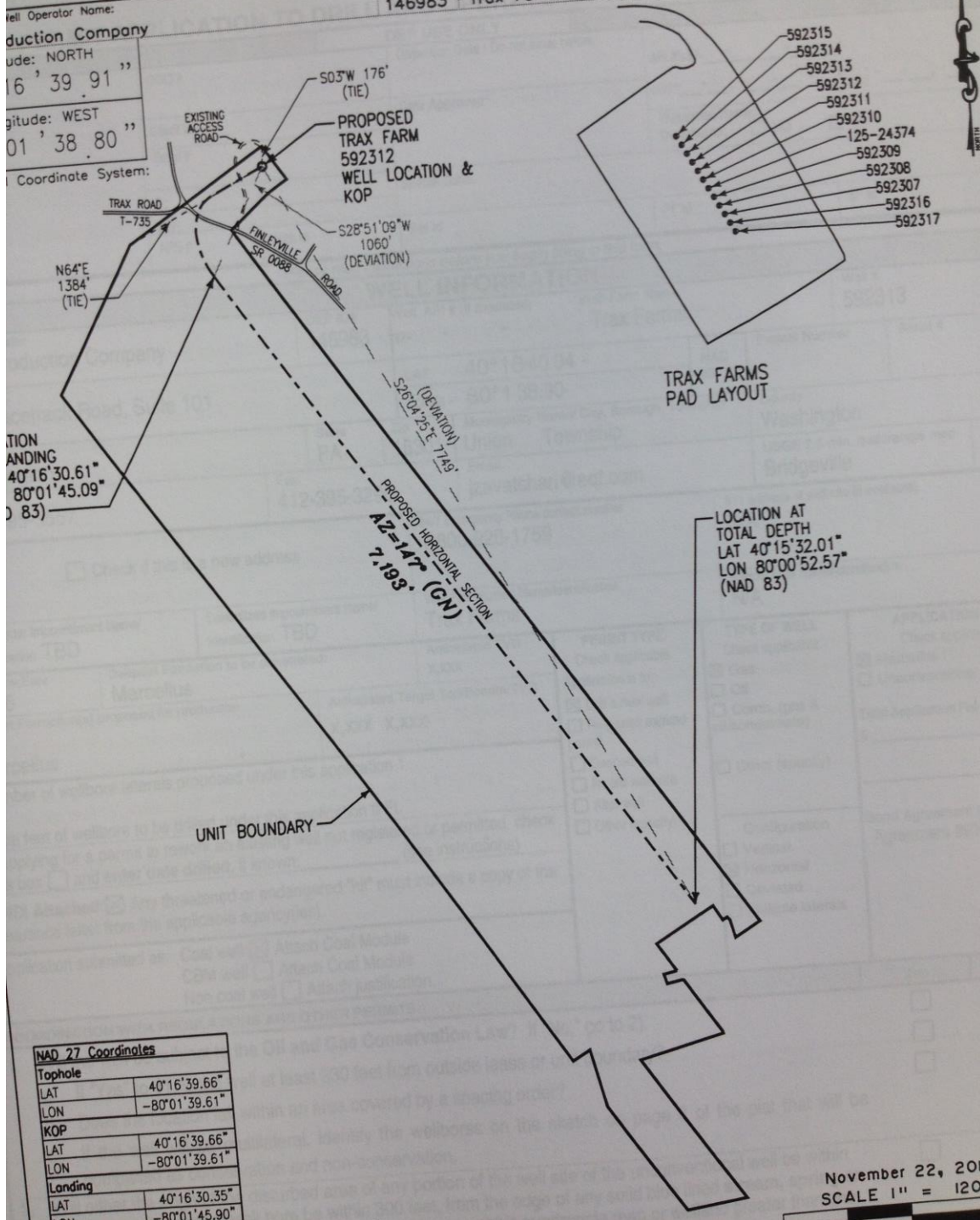
Well Operator Name:
Production Company

Grid: NORTH
Easting: 16' 39' 91"
Latitude: WEST
101' 38' 80"

Coordinate System:

LOCATION
LANDING
LAT 40°16'30.61"
LON 80°01'45.09"
(NAD 83)

NAD 27 Coordinates	
Tophole	
LAT	40°16'39.66"
LON	-80°01'39.61"
KOP	
LAT	40°16'39.66"
LON	-80°01'39.61"
Landing	
LAT	40°16'30.35"
LON	-80°01'45.90"



LOCATION AT
TOTAL DEPTH
LAT 40°15'32.01"
LON 80°00'52.57"
(NAD 83)

November 22, 2013
SCALE 1" = 120'

Client / Well Operator Name:

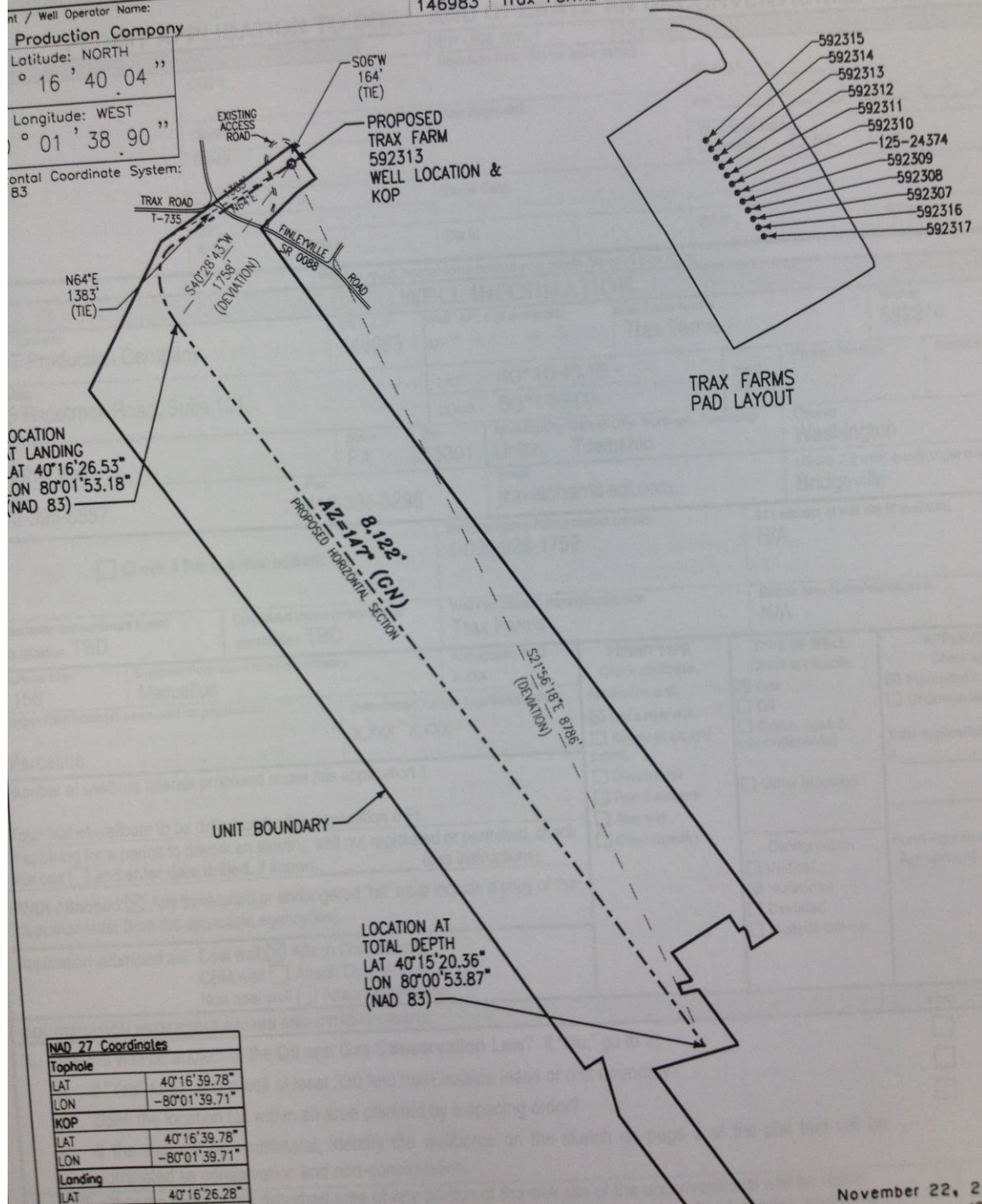
DEP ID#: 146983 Well (Farm) Name: Trax Farms

Production Company

Latitude: NORTH
0° 16' 40.04"

Longitude: WEST
80° 01' 38.90"

Horizontal Coordinate System:
NAD 83



LOCATION AT LANDING
LAT 40°16'26.53"
LON 80°01'53.18"
(NAD 83)

LOCATION AT TOTAL DEPTH
LAT 40°15'20.36"
LON 80°00'53.87"
(NAD 83)

NAD 27 Coordinates	
Tophole	
LAT	40°16'39.78"
LON	-80°01'39.71"
KOP	
LAT	40°16'39.78"
LON	-80°01'39.71"
Landing	
LAT	40°16'26.28"

0002 4/2012

WELL LOCATION PLAT

PAGE 3 Plan View of Deviated Well Bore

Well #: 592314

Operator Name:

Production Company

Direction: NORTH

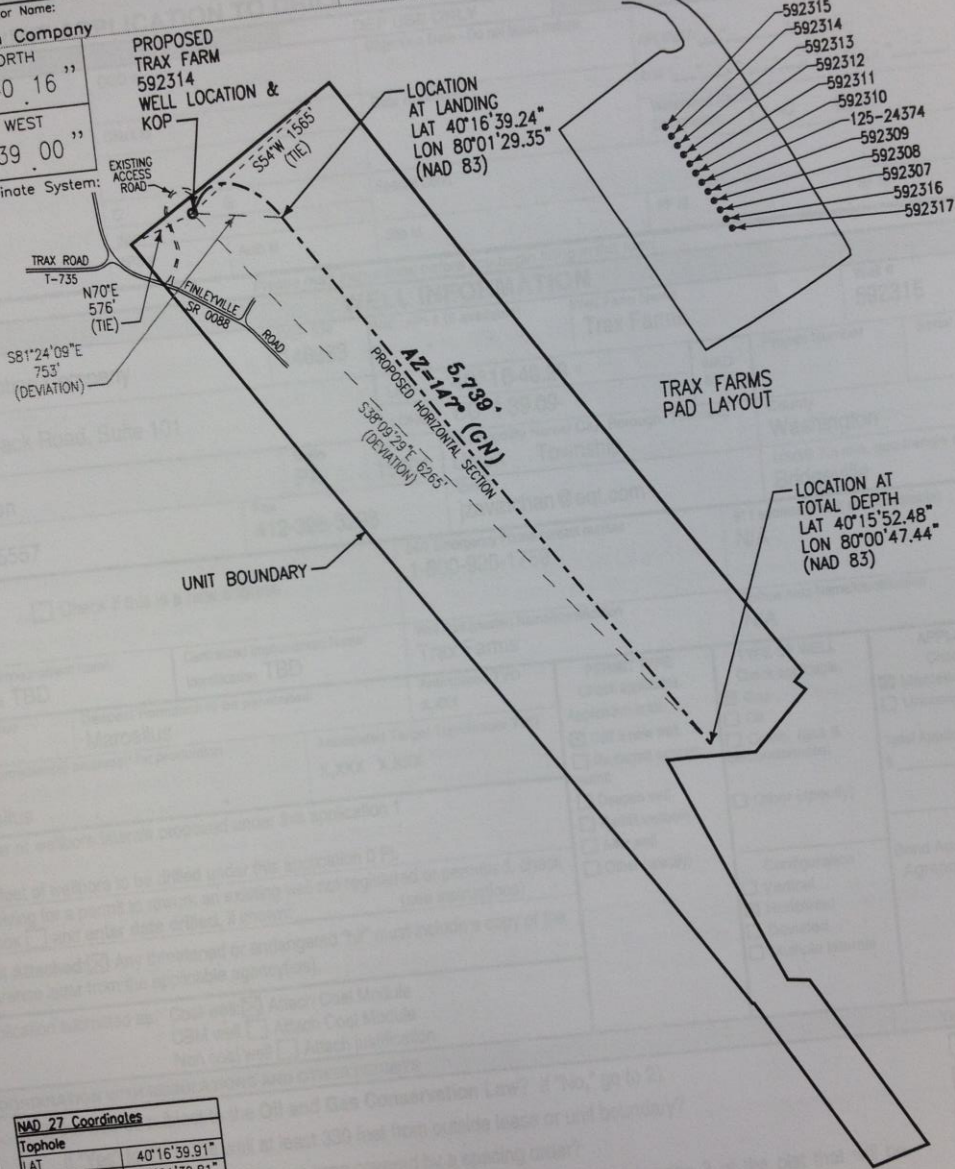
Length: 6' 40.16"

Width: WEST

Length: 01' 39.00"

Coordinate System:

DEP ID#: 146983 Well (Farm) Name: Trax Farms

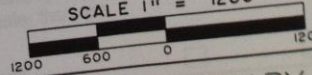


NAD 27 Coordinates	
Tophole	
LAT	$40^{\circ}16'39.91''$
LON	$-80^{\circ}01'39.81''$
KOP	
LAT	$40^{\circ}16'39.91''$
LON	$-80^{\circ}01'39.81''$
Landing	
LAT	$40^{\circ}16'38.99''$
LON	$-80^{\circ}01'30.17''$
Bottomhole	
LAT	$40^{\circ}15'52.23''$

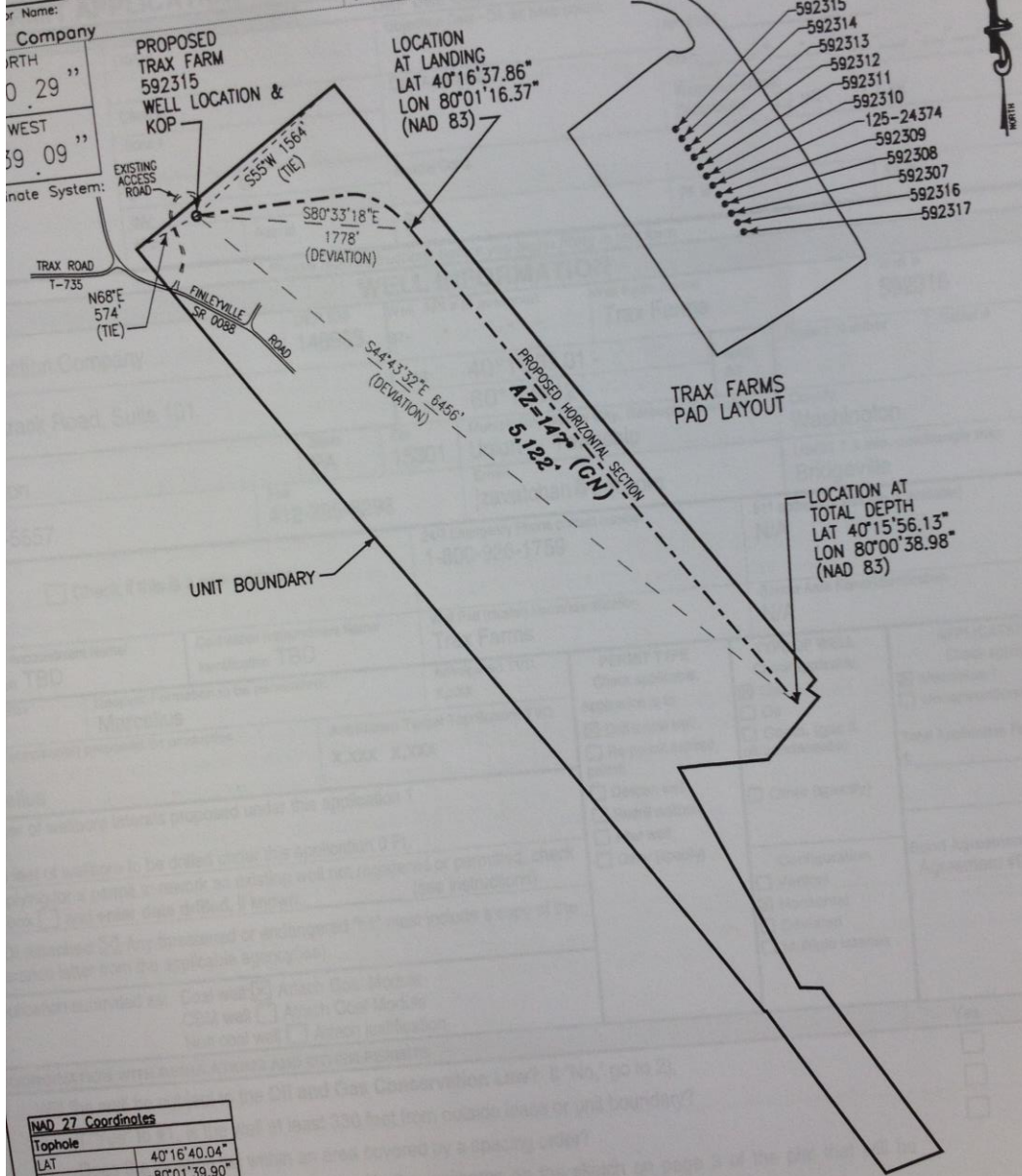
TOTAL UNIT ACREAGE

EXISTING SURFACE ELEVATION - 1156± FT.

November 22, 2013
SCALE 1" = 1200'



Company
 NORTH
 0.29"
 WEST
 59.09"
 Date System:



NAD 27 Coordinates	
Tophole	
LAT	40°16'40.04"
LON	-80°01'39.90"
KOP	
LAT	40°16'40.04"
LON	-80°01'39.90"
Landing	
LAT	40°16'37.60"
LON	-80°01'16.37"

November 22, 2013
 SCALE 1" = 1200'

WELL LOCATION PLAT

PAGE 3 Plan View of Deviated Well Bore

Well #: 592316

Applicant / Well Operator Name:

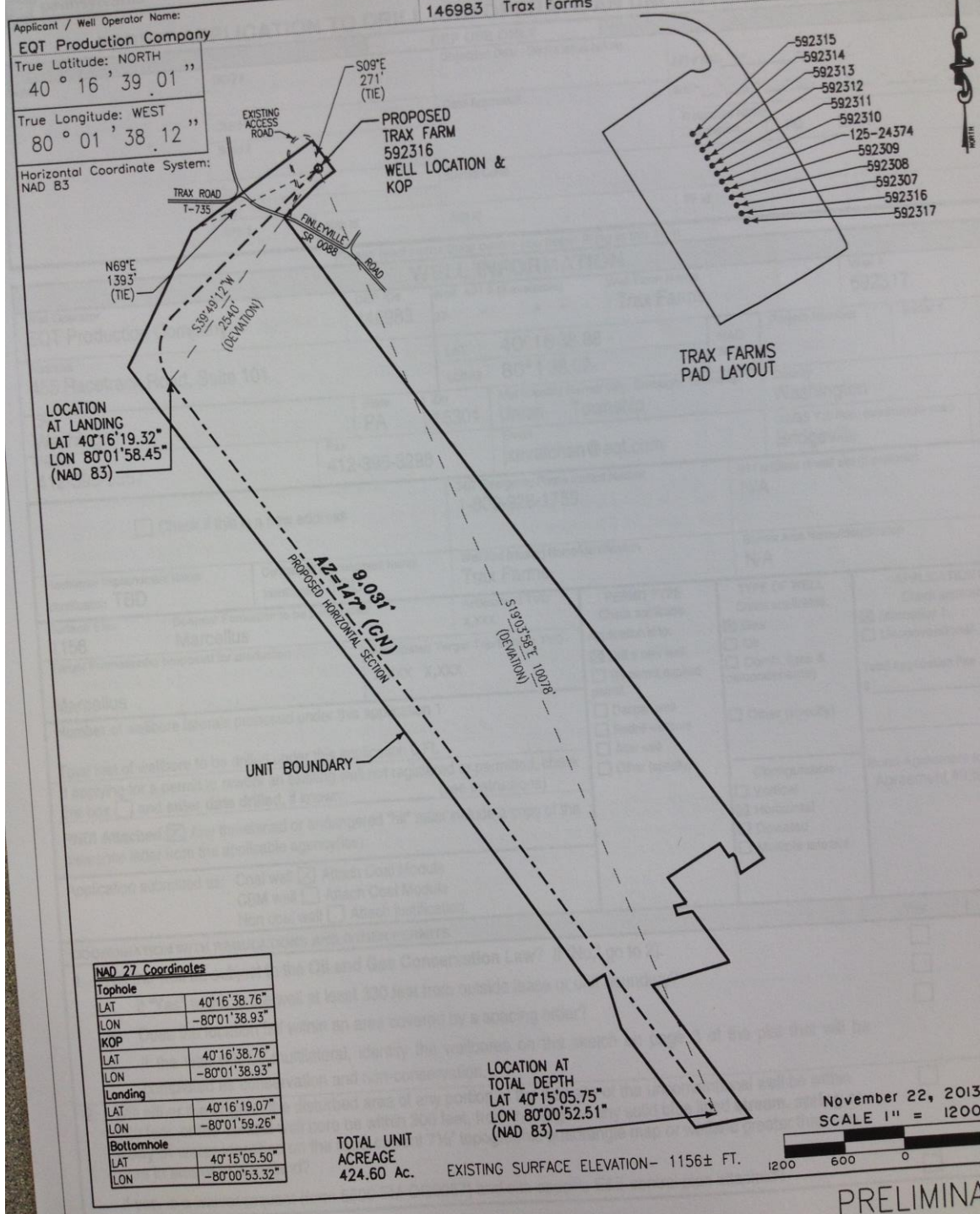
EQT Production Company

True Latitude: NORTH
40° 16' 39.01"

True Longitude: WEST
80° 01' 38.12"

Horizontal Coordinate System:
NAD 83

DEP ID#: 146983 Well (Farm) Name: Trax Farms

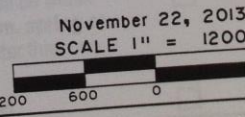


NAD 27 Coordinates	
Tophole	
LAT	40°16'38.76"
LON	-80°01'38.93"
KOP	
LAT	40°16'38.76"
LON	-80°01'38.93"
Landing	
LAT	40°16'19.07"
LON	-80°01'59.26"
Bottomhole	
LAT	40°15'05.50"
LON	-80°00'53.32"

TOTAL UNIT
ACREAGE
424.60 Ac.

LOCATION AT
TOTAL DEPTH
LAT 40°15'05.75"
LON 80°00'52.51"
(NAD 83)

EXISTING SURFACE ELEVATION- 1156± FT.



PRELIMINARY